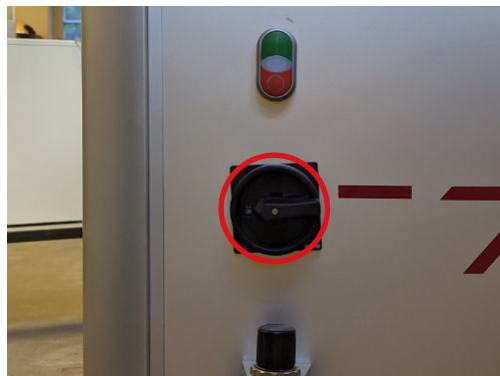


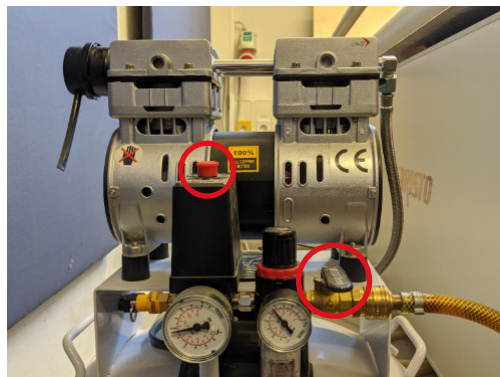
# STEP-BY-STEP INSTRUCTIONS

## Aristomat TL 1310 CUTTING MACHINE

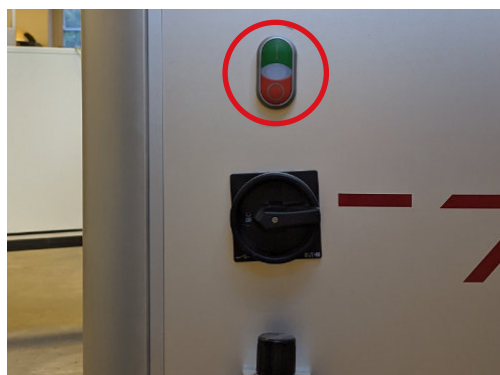
**1** Turn the black switch clockwise to switch the machine ON



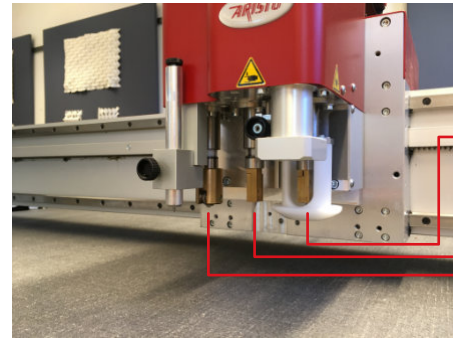
**2** Pull the red cup up and turn the valve clockwise to start the compressor



**3** Press the green button to unlock the the machines security system

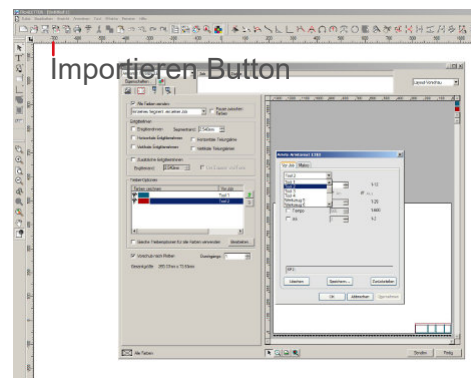


**4**

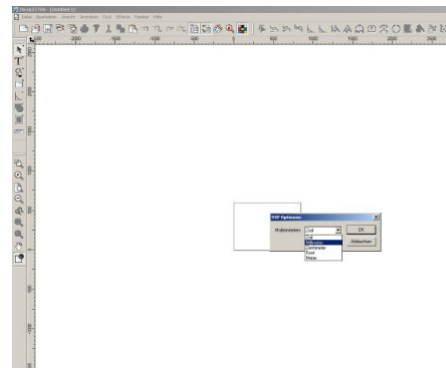


Knife 1- oscillating for small parts  
 Knife 2- cutting for large parts  
 Knife 3- creasing div. fold

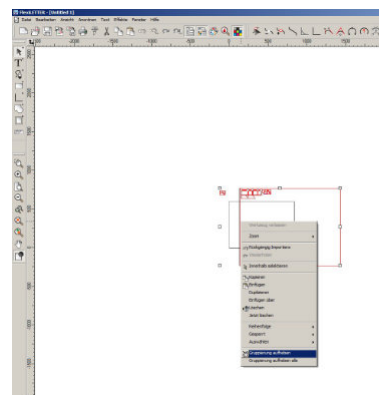
**5** FlexiLetter- open the program and import your files



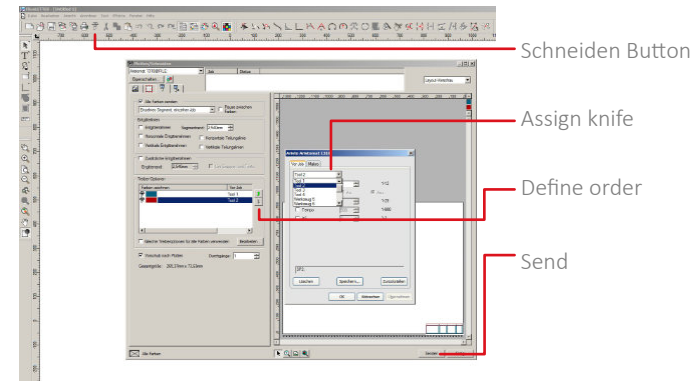
**6** Choose mm as unit of measurement



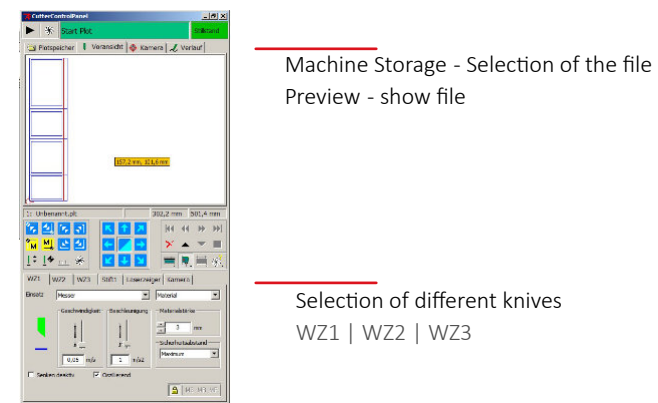
**7** Ungroup imported file to edit the single objects



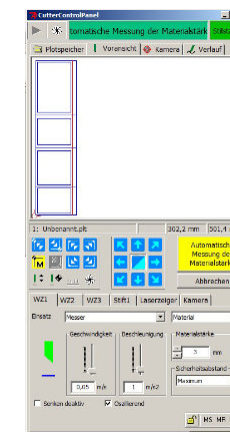
**8** Send file to the mashine and assign knife



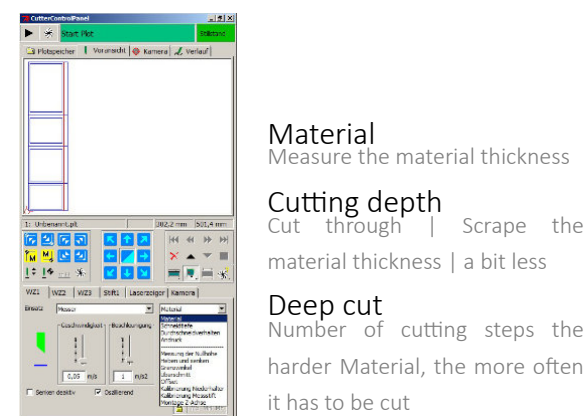
**9** CutterControlPanel- Service



**10** Automatic measurement of the material thickness



**11** Knife adjustment

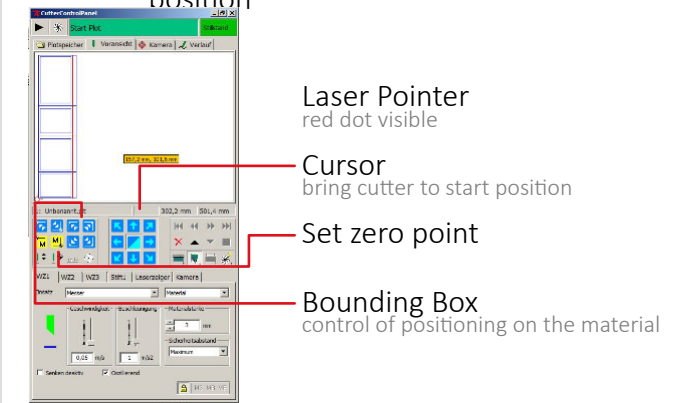


**Material**  
 Measure the material thickness

**Cutting depth**  
 Cut through | Scrape the material thickness | a bit less

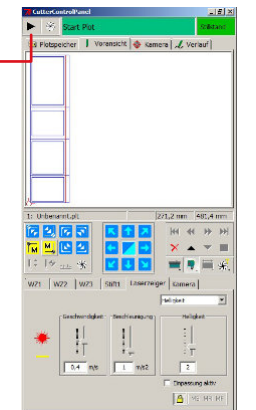
**Deep cut**  
 Number of cutting steps the harder Material, the more often it has to be cut

**12** Set zero point | Determine starting position



**13** Start job

Press "Play" button



**14** Finally, make sure the machine is left in the clean condition

